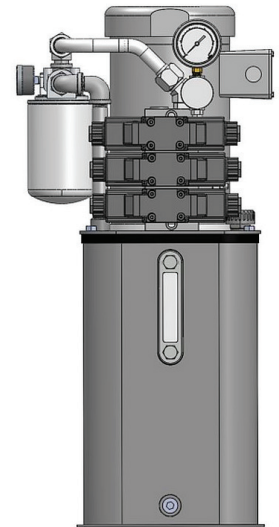
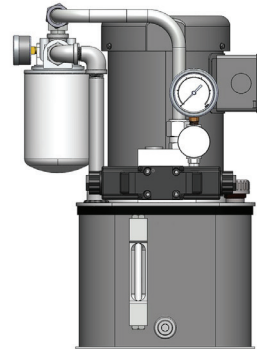
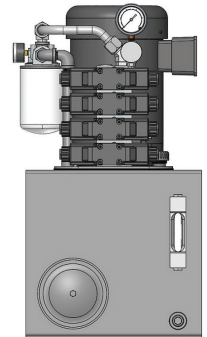
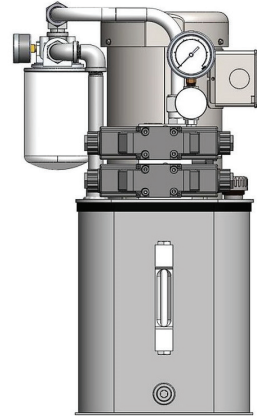


Double A
Hydraulics



Circuitpak™ Hydraulic Power Units



536 TOWNSHIP LINE ROAD
FLUID TECHNOLOGY ANNEX
BLUE BELL, PENNSYLVANIA 19422
Tel: 215.643.0617
Fax: 216.643.4017
sales@doubleahydraulics.com
www.doubleahydraulics.com

T2V - 05 - M - P1 / FC-JL-A120-TPC-CBC / - F1 - 047

RESERVOIR

T2V: 2 GALLON
 T3V: 3 GALLON
 T5V: 5 GALLON
 T10V: 10 GALLON

NOMINAL GEAR PUMP

05: 0.5 GPM
 10: 1.0 GPM
 15: 1.5 GPM
 20: 2.0 GPM
 30: 3.0 GPM
 40: 4.0 GPM

VALVE PATTERN

M: D03 VALVE PATTERN

MANIFOLD WITH RELIEF

NN: AND CUSTOMER CONNECTIONS ONLY
 P1: AND ONE DIRECTIONAL CONTROL VALVE
 P2: AND TWO DIRECTIONAL CONTROL VALVES
 P3: AND THREE DIRECTIONAL CONTROL VALVES
 P4: AND FOUR DIRECTIONAL CONTROL VALVES

MOTOR HORSEPOWER

034: 3/4 HP 230/460 3P TEFC 1800 RPM (56C)
 047: 1 HP 230/460 3P TEFC 1800 RPM (56C)
 059: 1.5 HP 230/460 3P TEFC 1800 RPM (56C)
 069: 2 HP 230/460 3P TEFC 1800 RPM (56C)
 079: 3 HP 230/460 3P TEFC 1800 RPM (56C)

RETURN FILTER

F1: 10 MICRON RETURN FILTER
 **: NO RETURN FILTER

MANIFOLD STATION

/ /: DESCRIPTION OF EACH MANIFOLD STATION
 (FOR P* OPTIONS- SEE DETAILS BELOW)

P* Manifold Option Information

Each station on the manifold will have either a directional control valve or a cover plate. There is an option to add selected sandwich valve under the directional control valve at each station. The directional control valve is listed first, followed by the sandwich valve(s) listed left to right in order from adjacent to the manifold then working up towards the directional control valve.

- / _____ - - - - - /

Directional Control Valves: 2 Solenoid Directional Control Valves, 3 Position, Spring Centered	
Spool	Function
FC	Closed Center
FO	Open Center
FFF	P Port Closed, A & B to T while Centered
FTTO	P to T, A & B Blocked while Centered

Directional Control Valves: Single Solenoid Valve, 2-position, Spring Offset (Solenoid B)	
Spool	Function
JC	P to A, B to T while de-energized (transition porting closed)
JO	P to A, B to T while de-energized (transition porting open)

Directional Control Valves: Single Solenoid Valve, 2-position, Spring Offset (Solenoid A)	
Spool	Function
GC	P to B, A to T while de-energized (transition porting closed)
GO	P to B, A to T while de-energized (transition porting open)

Electrical	
Item	Description
JL	Junction Box
DN	DIN Connector with Light
A120	120/1/60/50 AC
R120	120/1/60/50 Rectified AC
D12	12 VDC
D24	24 VDC

Sandwich Valves	
Item	Description
RVC	Relief Valve, Cross-Ported A & B
WP	Pressure Reducing Valve in P Port
WRP	Pressure Reducing-Relieving Valve in P Port
CBA	Counterbalance Valve (3:1) in A Port, Pilot from B
CBB	Counterbalance Valve (3:1) in B Port, Pilot from A
CBC	Counterbalance Valve (3:1) in A & B, Cross Port Pilot
POA	Pilot Check Valve in Port A, Pilot from B
POB	Pilot Check Valve in Port B, Pilot from A
POC	Pilot Check Valves in Ports A & B, Cross Port Pilot
FIA	Flow Control Valve, (w/reverse check), Meter In A-Port
FIB	Flow Control Valve, (w/reverse check), Meter In B-Port
FOA	Flow Control Valve, (w/reverse check), Meter Out A-Port
FOB	Flow Control Valve (w/reverse check), Meter Out B-Port
FIC	Flow Control Valve (w/reverse check), Meter In A & B Ports
FOC	Flow Control Valve (w/reverse check), Meter Out A & B Ports
TPP	Tapping Plate, P & T
TPC	Tapping Plate, A & B
CPX	Cover Plate, Blocked Ports